

MONTHLY MEMBERSHIP PROGRESS REPORT

LOCATION INDIA

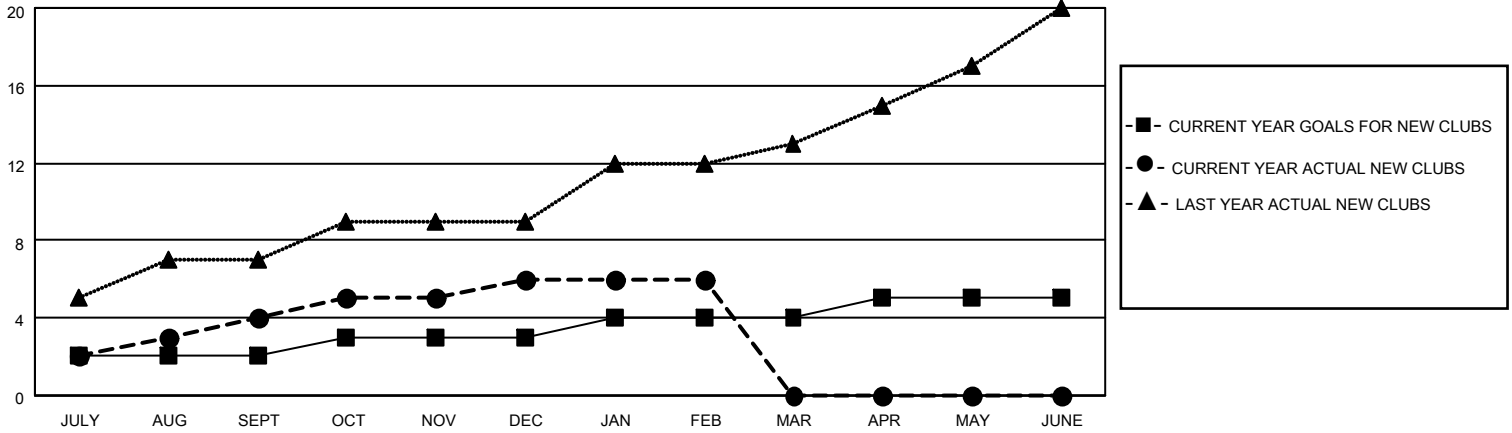
District 3231A2

Results as of: 2/28/2023

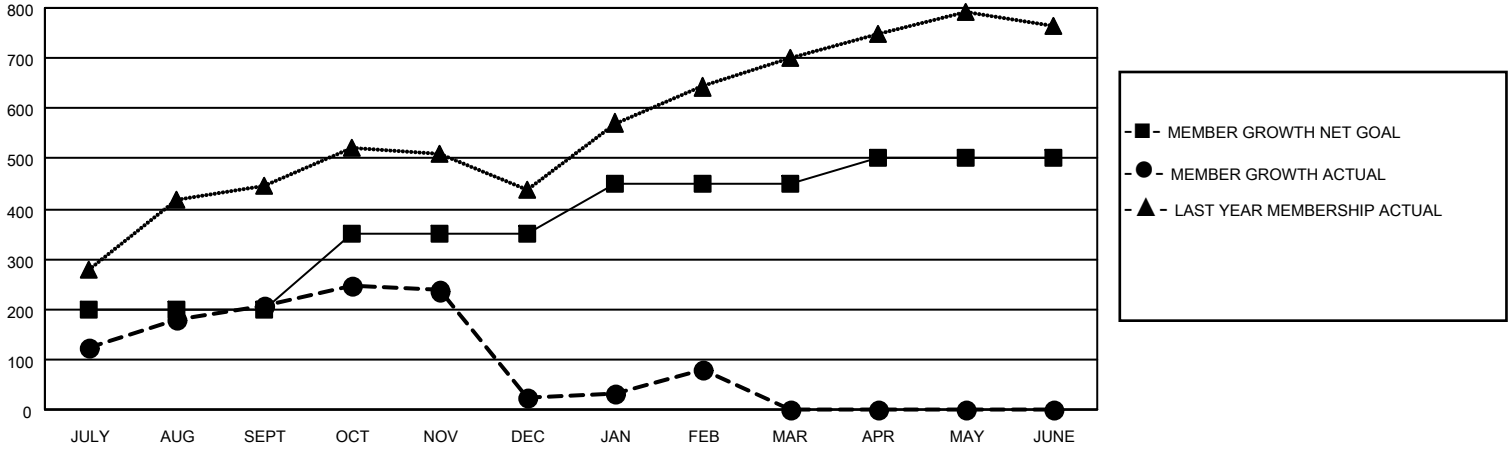
Clubs			
RESULTS FOR 2022-2023			
QUARTER	NEW CLUB GOAL	NEW CLUBS	DROPPED CLUBS
JULY/AUG/SEPT	2	4	0
OCT/NOV/DEC	1	2	1
JAN/FEB/MAR	1	0	0
APR/MAY/JUNE	1	0	0

Members			
RESULTS FOR 2022-2023			
QUARTER	MEMBER GROWTH NET GOAL	MEMBER GROWTH ACTUAL	DROPPED MEMBERS ACTUAL (including transfers)
JULY/AUG/SEPT	200	300	80
OCT/NOV/DEC	150	108	275
JAN/FEB/MAR	100	102	39
APR/MAY/JUNE	50	0	0

GOALS AND ACTUAL NEW CLUBS CUMULATIVE



GOALS AND ACTUAL MEMBERS CUMULATIVE



DROPPED CLUBS: 1

72 CLUBS OF 121 ADDED 1 OR MORE NEW MEMBERS

GENDER DISTRIBUTION

DROPPED MEMBERS

DECEASED	8
CLUB CANCELLED	26
OTHER	360
TOTAL	394

[CLICK HERE FOR CUMULATIVE MEMBERSHIP DATA](#)

MALE	2,702 (60.91%)
FEMALE	1,733 (39.07%)
NON BINARY	0 (0.00%)
PREFER NOT TO ANSWER	1 (0.02%)

TOTAL FAMILY UNIT MEMBERS 2,203

FAMILY MEMBERS PAYING HALF DUES 1,196